



Sismicidad Año 2006

La siguiente información fue registrada por la Red Nacional de Sismógrafos y procesada en el Instituto Geofísico de la Escuela Politécnica Nacional. Se presentan los sismos de magnitud mayor o igual a 4 en la escala de Richter. La distancia y azimut son determinados con respecto a la ciudad referencial, que es la capital de provincia más cercana al evento.

FECHA AAAA/mm/dd	TIEMPO HH:MM	LAT. grados	LONG. grados	PROF. Mag. Kim ----	DIST km	AZIMUT grados	CIUDAD
2005/12/31	22:37	0.774	-79.542	12.0 4.2	26.0	326.9	ESMERALDAS
2006/01/02	15:43	-1.480	-77.838	205.5 4.3	16.9	266.3	PUYO
2006/01/03	23:44	0.557	-78.301	131.6 4.1	30.5	135.8	IBARRA
2006/01/04	01:50	-2.810	-80.747	20.0 4.1	100.6	119.8	MACHALA
2006/01/04	07:57	-0.543	-80.210	7.0 4.0	62.3	205.3	PORTOVIEJO
2006/01/04	18:30	0.751	-80.240	34.8 4.0	67.8	69.0	ESMERALDAS
2006/01/04	20:42	-1.259	-80.886	33.3 4.0	53.7	64.4	PORTOVIEJO
2006/01/05	04:46	0.440	-79.726	12.0 4.5	59.2	6.0	ESMERALDAS
2006/01/06	02:58	-1.016	-78.087	12.0 4.0	29.9	97.3	TENA
2006/01/07	02:40	-3.166	-79.240	12.0 4.3	39.9	39.7	CUENCA
2006/01/07	06:00	-1.265	-80.440	12.0 4.3	23.9	357.3	PORTOVIEJO
2006/01/08	01:23	-1.816	-77.977	188.5 4.6	36.3	357.8	PUYO
2006/01/10	18:06	-1.292	-81.210	5.0 4.2	88.6	72.3	PORTOVIEJO
2006/01/12	12:24	-2.065	-80.717	12.0 4.2	91.8	98.7	GUAYAQUIL
2006/01/12	20:28	-0.595	-81.165	12.0 4.1	94.2	122.5	PORTOVIEJO
2006/01/12	22:55	-1.588	-81.674	5.0 4.2	148.6	66.3	PORTOVIEJO
2006/01/12	23:53	-0.233	-80.707	33.2 4.1	95.2	162.6	PORTOVIEJO
2006/01/13	03:28	-0.307	-81.361	12.0 4.3	130.5	129.2	PORTOVIEJO
2006/01/13	15:47	-0.619	-81.284	16.0 4.0	104.3	117.3	PORTOVIEJO
2006/01/14	03:47	-2.227	-80.749	12.0 4.0	94.3	87.5	GUAYAQUIL
2006/01/15	08:34	-4.314	-80.718	16.0 4.4	144.1	35.7	MACHALA
2006/01/19	01:56	-2.573	-77.893	12.0 4.2	39.3	318.0	MACAS
2006/01/21	09:13	-0.445	-80.134	11.8 4.0	75.8	207.6	PORTOVIEJO
2006/01/22	01:18	-1.534	-77.972	188.7 4.4	5.3	337.7	PUYO
2006/01/25	05:21	-1.080	-78.357	12.0 4.0	33.6	299.7	LATACUNGA
2006/01/25	08:31	-1.115	-78.352	14.8 4.2	33.8	245.9	AMBATO
2006/01/25	13:24	-1.094	-78.342	6.8 4.3	35.8	243.1	AMBATO
2006/01/28	18:51	-2.897	-79.757	16.0 4.5	46.1	209.1	MACHALA
2006/01/28	23:32	-1.091	-78.363	14.8 4.1	33.7	302.1	LATACUNGA
2006/02/01	08:05	-1.949	-78.894	12.0 4.0	41.2	41.2	RIOBAMBA
2006/02/04	21:52	-0.389	-78.593	14.0 4.1	23.4	26.2	QUITO
2006/02/05	14:11	-3.715	-79.608	12.0 4.3	54.3	125.7	LOJA
2006/02/08	05:05	-2.939	-78.461	79.2 4.1	48.0	298.9	AZOGUES
2006/02/08	17:29	-0.974	-79.346	93.5 4.0	77.5	150.3	GUARANDA
2006/02/08	21:59	-2.647	-77.215	12.0 4.1	108.2	290.2	MACAS
2006/02/10	01:05	0.725	-79.898	12.0 4.2	37.2	43.0	ESMERALDAS
2006/02/11	05:56	-4.327	-80.943	15.0 4.5	161.0	42.6	MACHALA
2006/02/12	07:38	-3.082	-78.951	12.0 4.1	22.3	342.8	CUENCA
2006/02/13	14:19	-4.246	-80.524	40.0 4.4	126.2	29.7	MACHALA
2006/02/18	14:51	-2.067	-77.244	173.4 4.4	102.0	254.6	MACAS
2006/02/18	16:07	-4.210	-79.616	122.8 5.0	50.6	62.6	LOJA

GANADOR DEL PREMIO MUNDIAL SASAKAWA-UNDRO 1992

A la mejor labor en Mitigación de Desastres



ESCUELA POLITECNICA NACIONAL
INSTITUTO GEOFISICO

Campus Ing. José Rubén Orellana Apartado 2759 Telex: 22650 ESPONA Telf: 2225-655; 2507-144; 2507-150 ext 631
Quito - Ecuador Fax: (593)-2-2567847 - www.igeqn.edu.ec

2006/02/21	21:15	-1.868	-77.672	173.7	4.0	54.8	319.9	PUYO
2006/02/22	03:56	-2.171	-77.278	16.0	4.2	95.9	260.7	MACAS
2006/02/22	08:25	0.592	-79.111	21.5	4.0	75.0	304.1	ESMERALDAS
2006/02/22	19:34	-1.743	-77.194	9.9	4.2	92.7	287.7	PUYO
2006/02/24	21:13	-0.213	-78.511	9.3	4.0	1.9	39.0	QUITO
2006/02/26	10:09	1.078	-77.382	15.0	4.2	48.0	231.6	TULCAN
2006/03/02	11:58	-1.251	-80.493	16.0	4.4	22.9	11.9	PORTOVIEJO
2006/03/05	00:28	-4.863	-76.030	12.0	5.4	334.1	285.2	ZAMORA
2006/03/06	04:42	-1.930	-77.812	194.0	4.3	52.7	338.0	PUYO
2006/03/06	10:50	-2.760	-78.250	5.0	4.0	51.7	14.9	MACAS
2006/03/08	16:54	-0.967	-79.309	114.8	4.2	76.3	153.3	GUARANDA
2006/03/09	11:25	-3.519	-78.185	12.0	4.0	103.7	233.8	ZAMORA
2006/03/09	15:48	-4.676	-76.075	15.0	4.2	324.5	281.9	ZAMORA
2006/03/10	17:09	-3.574	-78.595	194.5	4.5	67.1	214.7	ZAMORA
2006/03/12	10:08	-3.487	-80.880	45.0	4.2	105.1	76.2	MACHALA
2006/03/16	08:47	-3.191	-81.059	20.9	4.1	122.2	93.6	MACHALA
2006/03/16	12:45	-1.863	-80.127	12.0	4.0	44.2	145.3	GUAYAQUIL
2006/03/18	06:50	-0.966	-80.963	20.0	4.0	57.8	99.3	PORTOVIEJO
2006/03/19	12:41	-4.218	-81.026	25.0	4.1	159.1	48.0	MACHALA
2006/03/24	22:52	-1.776	-80.402	12.0	4.3	72.3	129.5	GUAYAQUIL
2006/04/06	19:43	-4.122	-79.047	42.8	4.3	13.3	63.9	ZAMORA
2006/04/06	23:00	0.476	-78.150	6.0	4.0	13.6	161.2	IBARRA
2006/04/09	11:51	-1.460	-80.854	12.0	4.2	63.9	44.6	PORTOVIEJO
2006/04/14	20:08	-1.016	-78.309	10.3	4.3	35.9	285.5	LATACUNGA
2006/04/18	02:00	1.041	-79.674	7.0	4.4	7.9	176.4	ESMERALDAS
2006/04/21	12:20	-1.879	-79.804	18.0	4.2	31.6	73.8	BABAHOYO
2006/04/21	21:05	0.826	-80.981	10.0	4.3	146.5	83.7	ESMERALDAS
2006/04/27	17:46	-2.042	-82.829	15.0	4.1	286.4	67.4	PORTOVIEJO
2006/04/30	01:25	-2.055	-79.711	39.7	4.0	25.8	234.4	GUAYAQUIL
2006/05/01	19:02	-2.840	-79.578	14.0	4.1	63.0	222.2	MACHALA
2006/05/02	17:27	0.725	-80.482	40.6	4.0	94.3	73.2	ESMERALDAS
2006/05/04	00:49	-0.150	-79.720	22.2	4.7	124.6	2.6	ESMERALDAS
2006/05/11	08:04	-2.053	-80.244	13.0	4.2	41.1	111.8	GUAYAQUIL
2006/05/19	12:53	-4.260	-80.856	0.0	4.6	149.1	41.8	MACHALA
2006/05/23	17:05	-2.224	-79.586	23.2	4.2	35.1	276.1	GUAYAQUIL
2006/05/29	03:35	-1.741	-80.383	5.4	4.7	73.3	132.9	GUAYAQUIL
2006/06/02	21:28	-0.759	-79.790	24.3	4.0	80.1	246.2	PORTOVIEJO
2006/06/04	12:04	-0.731	-81.356	10.0	4.3	106.7	109.4	PORTOVIEJO
2006/06/10	21:49	-2.386	-79.881	12.0	4.3	21.9	354.6	GUAYAQUIL
2006/06/15	12:38	-2.944	-79.251	12.0	4.0	27.4	77.4	CUENCA
2006/06/15	15:04	0.900	-79.747	12.0	4.1	11.5	48.0	ESMERALDAS
2006/06/16	00:25	-2.765	-79.565	12.0	4.0	63.1	102.7	CUENCA
2006/06/17	10:25	-2.341	-77.936	15.0	4.1	21.8	279.1	MACAS
2006/06/21	07:40	-2.145	-77.416	179.9	4.9	81.4	257.0	MACAS
2006/06/26	02:21	-0.528	-80.152	12.0	4.0	66.8	209.7	PORTOVIEJO
2006/06/26	14:37	-2.936	-79.398	21.0	5.0	43.4	83.2	CUENCA
2006/06/27	03:13	-2.853	-79.428	21.0	4.5	46.5	95.1	CUENCA
2006/06/27	08:40	-3.943	-79.919	20.0	5.1	76.0	356.6	MACHALA
2006/06/27	09:41	-2.867	-79.783	21.0	4.5	47.9	204.2	MACHALA
2006/06/28	15:54	-3.257	-79.994	21.5	4.0	3.8	95.2	MACHALA
2006/07/01	14:15	-3.289	-81.063	25.0	4.4	122.3	88.5	MACHALA

GANADOR DEL PREMIO MUNDIAL SASAKAWA-UNDRO 1992

A la mejor labor en Mitigación de Desastres



ESCUELA POLITECNICA NACIONAL
INSTITUTO GEOFISICO

Campus Ing. José Rubén Orellana Apartado 2759 Telex: 22650 ESPONA Telf: 2225-655; 2507-144; 2507-150 ext 631
Quito - Ecuador Fax: (593)-2-2567847 - www.igeqn.edu.ec

2006/07/04	18:43	-1.650	-81.157	10.0	4.0	103.0	49.7	PORTOVIEJO
2006/07/13	10:03	-1.910	-81.741	10.0	5.0	172.3	56.3	PORTOVIEJO
2006/07/17	19:14	-1.138	-81.310	5.0	4.2	96.1	84.2	PORTOVIEJO
2006/07/19	22:36	-0.453	-81.810	5.0	4.3	165.0	113.7	PORTOVIEJO
2006/07/24	10:03	-1.337	-79.582	14.8	4.1	51.8	173.6	BABAHOYO
2006/07/28	02:18	0.683	-76.985	3.3	4.5	65.7	170.7	N_LOJA
2006/07/31	10:56	-0.953	-80.820	15.0	4.3	42.5	104.6	PORTOVIEJO
2006/07/31	15:21	-0.455	-81.861	6.9	4.3	170.1	112.9	PORTOVIEJO
2006/08/01	05:45	-4.093	-80.444	27.1	4.6	107.0	30.1	MACHALA
2006/08/01	19:20	0.029	-78.484	9.2	4.0	25.5	184.1	QUITO
2006/08/02	13:41	-4.120	-80.110	17.3	5.0	97.0	9.9	MACHALA
2006/08/05	05:21	-2.693	-78.150	12.0	4.2	42.6	3.0	MACAS
2006/08/06	00:32	-3.083	-80.447	27.3	4.8	57.4	110.0	MACHALA
2006/08/06	14:18	-4.103	-80.176	17.0	4.5	96.7	14.3	MACHALA
2006/08/09	08:54	-1.753	-80.392	12.0	4.5	73.1	131.7	GUAYAQUIL
2006/08/10	16:50	-0.431	-81.806	25.0	4.2	165.6	114.6	PORTOVIEJO
2006/08/10	17:48	-1.022	-78.313	14.8	4.0	35.6	286.7	LATACUNGA
2006/08/10	21:04	-4.419	-80.129	25.0	4.7	111.9	65.5	LOJA
2006/08/10	21:21	-4.526	-79.614	25.0	4.7	73.7	37.5	LOJA
2006/08/11	00:19	-1.826	-76.473	25.0	4.9	172.5	282.5	PUYO
2006/08/13	17:51	1.302	-79.409	12.0	4.0	46.9	218.2	ESMERALDAS
2006/08/16	00:16	-1.720	-78.122	12.0	4.7	29.5	29.8	PUYO
2006/08/17	10:03	-2.525	-77.385	15.0	4.0	86.1	286.1	MACAS
2006/08/17	10:32	-2.652	-78.377	12.0	4.0	46.9	35.8	MACAS
2006/08/17	18:15	-2.771	-79.201	32.0	4.0	24.9	121.9	CUENCA
2006/08/18	01:03	-2.367	-77.266	18.5	4.0	96.1	273.8	MACAS
2006/08/24	03:06	-2.761	-77.278	27.0	4.2	107.0	297.9	MACAS
2006/08/28	00:00	-2.320	-77.017	131.0	4.1	123.6	270.5	MACAS
2006/08/28	19:18	-2.815	-79.082	33.0	4.0	11.6	136.2	CUENCA
2006/08/30	10:58	-2.454	-77.279	12.0	4.4	95.8	279.6	MACAS
2006/09/02	13:54	-1.873	-77.589	12.0	4.9	61.6	313.7	PUYO
2006/09/03	19:38	-2.461	-77.715	16.0	4.2	49.1	290.0	MACAS
2006/09/03	22:21	-2.812	-79.599	12.0	4.5	63.9	218.9	MACHALA
2006/09/05	19:00	-2.594	-79.164	12.0	4.0	37.0	152.5	CUENCA
2006/09/07	23:47	-2.793	-78.825	26.0	4.4	7.2	346.9	AZOGUES
2006/09/11	22:31	-0.941	-80.916	25.0	4.4	53.2	103.1	PORTOVIEJO
2006/09/12	00:31	-0.886	-80.953	25.0	4.2	58.7	108.1	PORTOVIEJO
2006/09/12	21:23	-2.113	-78.095	151.1	4.0	22.2	190.1	MACAS
2006/09/17	13:40	-0.903	-80.863	20.3	4.0	48.7	109.5	PORTOVIEJO
2006/09/18	02:21	1.563	-80.490	12.0	4.0	112.5	125.9	ESMERALDAS
2006/09/18	06:27	0.288	-80.093	27.7	4.0	89.2	31.8	ESMERALDAS
2006/09/21	21:12	1.325	-79.504	12.0	4.1	43.5	205.1	ESMERALDAS
2006/09/21	21:17	-2.321	-77.368	14.8	4.0	84.7	270.8	MACAS
2006/09/22	22:05	-3.462	-77.144	44.0	4.3	168.4	319.5	MACAS
2006/09/23	05:53	-1.933	-77.204	12.0	4.2	100.2	299.4	PUYO
2006/09/25	03:22	-3.080	-78.769	22.3	4.1	34.1	308.4	CUENCA
2006/09/27	03:58	-3.292	-79.040	20.0	4.0	44.7	4.3	CUENCA
2006/09/27	22:43	-0.804	-79.621	16.6	4.3	96.1	253.5	PORTOVIEJO
2006/09/28	12:06	-1.039	-78.276	8.7	4.0	40.1	287.6	LATACUNGA
2006/10/06	18:42	-2.922	-78.083	18.0	4.9	68.2	355.6	MACAS
2006/10/06	19:12	0.786	-79.524	15.6	4.0	26.1	321.5	ESMERALDAS

GANADOR DEL PREMIO MUNDIAL SASAKAWA-UNDRO 1992

A la mejor labor en Mitigación de Desastres



ESCUELA POLITECNICA NACIONAL
INSTITUTO GEOFISICO

Campus Ing. José Rubén Orellana Apartado 2759 Telex: 22650 ESPONA Telf: 2225-655; 2507-144; 2507-150 ext 631
Quito - Ecuador Fax: (593)-2-2567847 - www.igeqn.edu.ec

2006/10/08	01:17	2.858	-80.049	12.0	4.3	214.0	168.7	ESMERALDAS
2006/10/09	09:11	-2.042	-78.411	141.1	4.2	43.2	133.6	MACAS
2006/10/09	13:07	-1.447	-81.159	10.0	4.2	90.2	60.8	PORTOVIEJO
2006/10/11	07:11	0.725	-79.105	9.9	4.0	68.4	293.4	ESMERALDAS
2006/10/11	22:18	1.791	-79.171	17.7	4.3	106.7	211.3	ESMERALDAS
2006/10/12	19:38	0.188	-80.000	6.4	4.1	94.3	22.9	ESMERALDAS
2006/10/13	22:44	-0.705	-78.755	14.8	4.1	29.1	149.1	LATACUNGA
2006/10/14	06:59	-2.506	-77.601	16.4	4.0	62.7	290.3	MACAS
2006/10/14	13:42	1.295	-79.392	12.0	4.2	47.5	220.6	ESMERALDAS
2006/10/15	00:30	-2.025	-80.394	12.0	4.0	57.9	108.4	GUAYAQUIL
2006/10/15	10:34	-0.114	-78.506	7.7	4.2	9.6	175.9	QUITO
2006/10/15	10:44	-0.122	-78.496	8.0	4.0	8.7	183.0	QUITO
2006/10/16	05:11	1.187	-77.946	130.5	4.7	48.9	149.1	TULCAN
2006/10/18	11:31	-4.544	-79.495	25.0	4.3	68.1	27.6	LOJA
2006/10/20	08:39	-2.304	-76.905	7.2	4.0	136.0	269.7	MACAS
2006/10/22	10:09	0.471	-79.957	12.0	4.0	63.9	29.9	ESMERALDAS
2006/10/25	22:44	1.477	-78.693	8.0	4.0	122.3	242.6	ESMERALDAS
2006/10/26	00:25	0.523	-80.112	16.0	4.1	69.9	44.7	ESMERALDAS
2006/10/27	13:07	0.010	-77.970	7.0	4.2	41.9	338.1	IBARRA
2006/10/27	23:26	-2.664	-77.477	33.2	4.3	82.5	298.5	MACAS
2006/10/29	03:28	0.204	-80.458	69.0	4.1	122.1	45.8	ESMERALDAS
2006/10/29	04:32	1.808	-79.283	12.0	4.0	102.5	204.8	ESMERALDAS
2006/10/30	06:30	-0.788	-80.181	12.0	4.0	41.7	225.8	PORTOVIEJO
2006/10/31	04:18	-2.474	-79.987	10.0	4.1	33.0	16.9	GUAYAQUIL
2006/10/31	04:55	-1.535	-77.973	195.9	4.8	5.3	339.2	PUYO
2006/11/03	05:39	-3.199	-76.716	12.0	4.0	185.4	302.2	MACAS
2006/11/04	14:15	-2.689	-78.326	36.6	4.2	47.4	27.3	MACAS
2006/11/09	10:32	0.076	-77.439	19.8	4.3	61.0	87.5	N_LOJA
2006/11/09	13:34	1.163	-80.497	12.0	4.3	94.3	103.2	ESMERALDAS
2006/11/09	22:16	-2.737	-77.856	12.0	4.2	56.4	327.3	MACAS
2006/11/10	00:26	-0.801	-79.707	35.7	4.0	87.0	251.4	PORTOVIEJO
2006/11/12	02:42	-1.878	-78.075	182.4	4.2	44.1	12.4	PUYO
2006/11/12	22:36	-2.134	-79.963	12.0	4.0	9.4	131.3	GUAYAQUIL
2006/11/13	07:53	-3.250	-79.758	12.0	4.0	22.4	267.3	MACHALA
2006/11/14	09:52	-1.811	-80.362	12.0	4.1	66.4	129.4	GUAYAQUIL
2006/11/16	20:09	-2.666	-77.818	14.0	4.3	52.6	318.8	MACAS
2006/11/17	22:33	-0.815	-79.629	37.8	4.0	94.9	254.0	PORTOVIEJO
2006/11/18	02:14	-0.820	-80.312	20.0	4.0	29.8	210.9	PORTOVIEJO
2006/11/20	09:33	-2.252	-78.507	174.2	4.1	42.3	98.8	MACAS
2006/11/23	03:32	0.395	-79.896	12.0	4.1	68.7	21.5	ESMERALDAS
2006/11/23	14:46	-3.370	-77.807	12.0	4.8	123.1	343.0	MACAS
2006/11/23	17:26	-1.741	-78.155	187.1	4.6	33.4	33.3	PUYO
2006/11/24	04:33	-1.043	-78.276	15.6	4.3	40.3	288.2	LATACUNGA
2006/11/24	05:15	-1.043	-78.284	15.6	4.0	39.3	288.6	LATACUNGA
2006/11/24	07:18	-1.305	-80.440	12.0	4.2	28.4	357.7	PORTOVIEJO
2006/11/24	07:47	-1.034	-78.291	14.5	4.2	38.3	287.5	LATACUNGA
2006/11/27	19:40	-2.448	-79.041	134.4	4.5	38.5	144.5	AZOGUES
2006/11/28	20:05	-2.672	-78.573	5.0	4.2	30.3	257.7	AZOGUES
2006/11/29	11:28	-0.709	-80.686	39.2	4.2	46.1	145.3	PORTOVIEJO
2006/11/29	15:00	-1.055	-80.564	42.2	4.1	12.7	87.5	PORTOVIEJO
2006/12/02	04:45	-1.217	-80.483	5.0	4.0	18.9	11.2	PORTOVIEJO

GANADOR DEL PREMIO MUNDIAL SASAKAWA-UNDRO 1992

A la mejor labor en Mitigación de Desastres



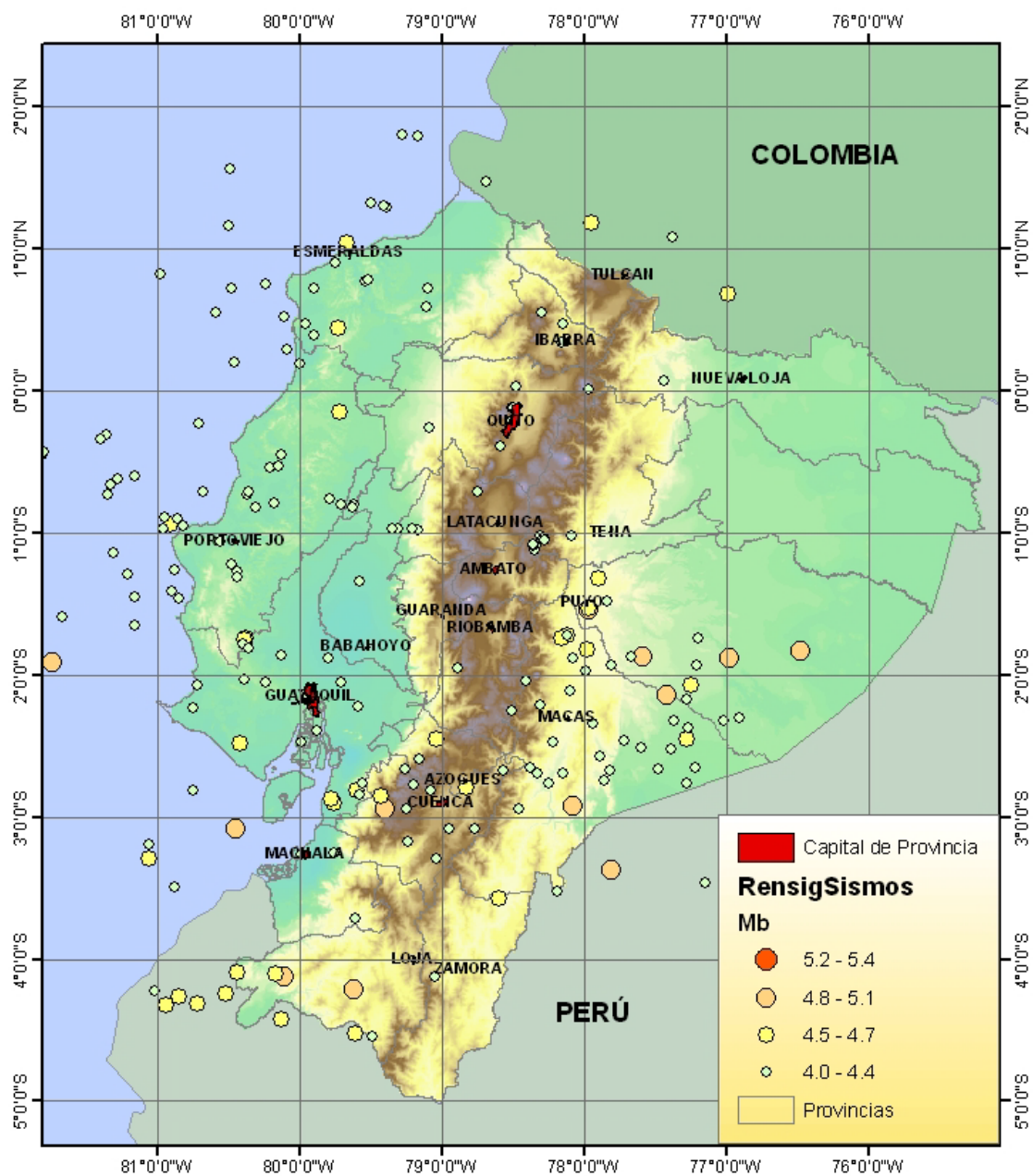
ESCUELA POLITECNICA NACIONAL
INSTITUTO GEOFISICO

Campus Ing. José Rubén Orellana Apartado 2759 Telex: 22650 ESPONA Telf: 2225-655; 2507-144; 2507-150 ext 631
Quito - Ecuador Fax: (593)-2-2567847 - www.igeqn.edu.ec

2006/12/03	09:16	-1.720	-78.119	169.0	4.3	29.3	29.2	PUYO
2006/12/06	16:51	-1.048	-78.284	16.1	4.0	39.6	289.4	LATACUNGA
2006/12/12	08:21	0.340	-78.156	5.1	4.3	5.6	66.5	IBARRA
2006/12/13	12:42	-2.473	-78.224	135.4	4.3	20.9	29.8	MACAS
2006/12/14	18:31	-0.981	-79.168	123.1	4.1	61.2	84.7	LATACUNGA
2006/12/15	14:22	-0.732	-80.370	5.0	4.2	36.4	194.1	PORTOVIEJO
2006/12/15	14:26	-0.705	-80.365	5.0	4.0	39.4	193.9	PORTOVIEJO
2006/12/17	04:40	-0.257	-79.090	15.1	4.2	65.8	84.5	QUITO
2006/12/18	00:25	-0.661	-81.334	13.6	4.2	107.3	113.7	PORTOVIEJO
2006/12/18	06:02	-2.661	-79.261	21.3	4.1	37.8	132.4	CUENCA
2006/12/18	14:07	-1.879	-76.973	16.0	4.9	120.9	291.0	PUYO
2006/12/19	00:34	-0.968	-79.212	118.2	4.0	65.9	86.4	LATACUNGA
2006/12/19	14:57	-2.207	-78.314	12.0	4.2	23.4	119.4	MACAS
2006/12/21	03:52	-1.971	-77.986	191.0	4.0	40.9	202.9	MACAS
2006/12/21	15:17	-2.485	-80.420	16.0	4.4	66.4	60.5	GUAYAQUIL
2006/12/29	09:20	-1.408	-80.899	12.0	4.1	63.8	51.5	PORTOVIEJO
2006/12/29	16:42	0.553	-80.592	20.0	4.1	112.5	65.7	ESMERALDAS
2006/12/30	23:48	-0.342	-81.402	11.7	4.3	131.8	126.7	PORTOVIEJO
2006/12/31	04:55	-1.315	-77.901	224.4	4.4	21.8	207.1	PUYO

GANADOR DEL PREMIO MUNDIAL SASAKAWA-UNDRO 1992

A la mejor labor en Mitigación de Desastres



GANADOR DEL PREMIO MUNDIAL SASAKAWA-UNDRO 1992
A la mejor labor en Mitigación de Desastres